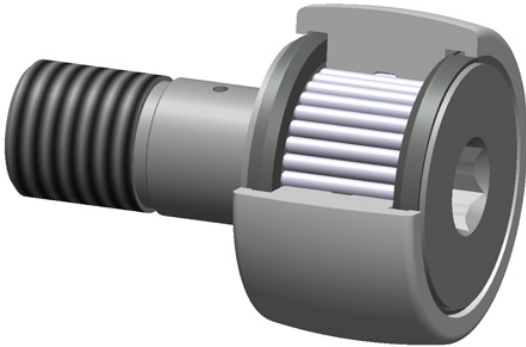




## Osborn Load BEARING LTD



### PCI Procal Inc. SCCF-6.00-SH Crowned & Flat Cam Followers Bearings

Bearing No. SCCF-6.00-SH

roller diameter:	6.0000 in
closure type:	Sealed
roller width:	3.2500 in
head type:	Hex
stud diameter:	2.5000 in
thread size:	2-1/2-12
stud length:	6.0000 in
radial dynamic load capacity:	61690 lbs
roller shape:	Crowned
radial static load capacity:	90900 lbs
roller material:	Chrome Steel
technical specifications:	<a href="#">Click here</a>
bearing element:	Needle Rollers

SCCF-6.00-SH Bearing 2D drawings and 3D CAD models